



a **change**
for the better

A logo for a 12-year warranty. It features the number '12' in a large, bold, red font, surrounded by a circle of small white stars. Below the number, the words 'YEARS WARRANTY' are written in a smaller, black, sans-serif font. The entire logo is positioned above a dark blue vertical bar.

BIFMA
MEMBER

A logo celebrating 40 years. It features the number '40' in a large, bold, blue font. The '0' is stylized with a red swoosh underneath. Above the '40', the words 'PUTTING E-MOTIONS AROUND YOU' are written in a small, red, sans-serif font. Below the '40', the word 'YEARS' is written in a small, red, sans-serif font.

index

75 MM CASTORS

06-09

 poly75

 poly75-bk

 sleek75

 sleek75-bk

65 MM CASTORS

10-17

 poly65

 poly65-bk

 slim65

 slim65-bk

 sleek65

 poly65-e

  pressure active65

60 MM CASTORS

18-21

 poly60-bk

 poly60

 sleek60-bk

 sleek60

55 MM CASTORS

22-26

 sleek55

 iconic55

 sparkle55

 poly55

50 MM CASTORS

27-41

 trend

  pressure active50

 trend pu

 elegant

 elegant pu

 formula50

 formula50-bk

 matt classic

 matt classic-bk

 matt classic-pu

 rollon

 interceptor-bk

 interceptor



innovation

index

40 MM CASTORS

42-43

 tiny

 tiny-bk

ANTI TOPPELER

44

 5th castor

35 MM CASTORS

45

 diplomat

30 MM CASTORS

46-47

 glib

 glib-bk

MULTI DIRECTIONAL
LEVELER

48

mdl

LEVELER

49-51

glide01

glide02

-  Soft Castor
-  Hard Castor
-  Zamak Castor
- bk** Break Castor

redefined





about us

Regal Castors is India's leading & professionally managed CASTOR WHEELS manufacturing & exporting company since 1984, today we are one of the leading manufacturers of wheels and castors worldwide. We manufacture and exports Castor Wheels & Furniture Components to top furniture manufacturing companies worldwide.

The products of REGAL CASTORS are produced & tested as per International Standards (ANSI, BIFMA, DIN, EN, CMA/FIRA, etc.) and we also make RoHS & REACH compliant Castors, used in various applications & industries. Our Castors have combined two basic & important characteristics to our product quality: "Resistance to Wear & Tear and Breakage".

We have multiple production centres where we produce 50 Million Castors annually & escalating at a steady pace, so you can take our claim of meeting your volume requirements.

We also specialise in the custom manufacture of Castors as OEM & ODM, for which design, production, testing & quality control, in fact, every aspect, are attended by us.

Our plants are well-equipped with latest & advanced machinery, have qualified & experienced personnel in sales, purchase and R&D who are always dedicated in search of better & newer developments. We have gained sufficient experience in this Industry and earned our customers' confidence, which has been a fine reward for our endeavours. We serve and owe our organisation's success to our top-notch and reputed clients worldwide.

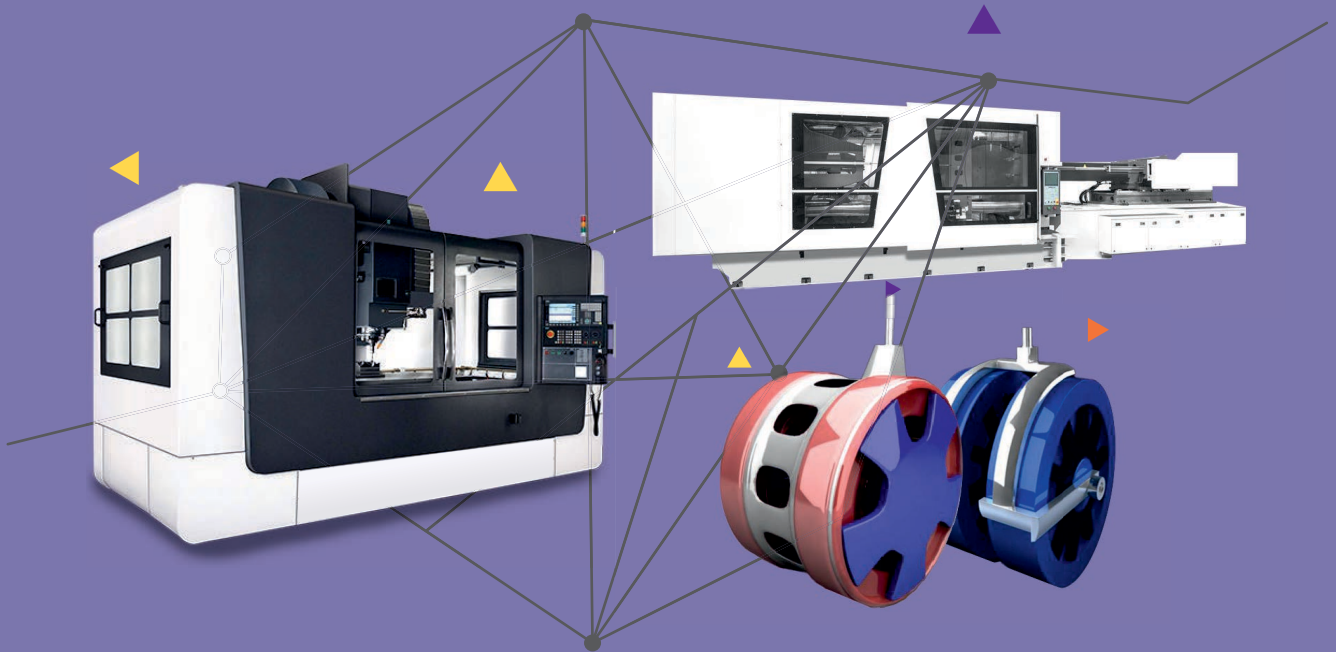
Our eminence in the market constantly facilitates client's base expansion and we also aspire to serve other market segments in Castor Wheels.

TOOLING AND ENGINEERING

manufacturing capabilities

We develop and build tools and systems in house to meet any requirement with our highly-qualified engineers & state of the art machinery.

Our in-house tooling guarantees that none of our tools sees any downtime and keeps our product quality high. We can assist you in designing almost any kind of Castor Wheel, Injection Moulded, Metal Stamping & Turned Component products.



PLASTICS PROCESSING

To stay ahead of the market, you need to be flexible. We are able to produce a wide range of Castor Wheels including Heat & Cold Resistant, Electrically Conductive & Hydrolysis Resistance versions. We use a range of high-performance machinery for the injection moulding process.

Our extremely high-performance tooling technology & advance machinery allows us to produce high-quality products.

CUSTOM ENGINEERED SOLUTION

When Make To Order or Custom Designs are required the demands are so unique that even our product range is too limited and custom designs are the solution.

It doesn't matter if additional functions or just another look is required, for us every inquiry is considered a challenge. So far, we have managed to find the perfect solution for every client.

We do everything that can technically be realised in the design and production of Castors to your specifications. You can be certain that we continue to implement more unusual ideas with the usual REGAL CASTORS.

Apart from Castors, we also do produce several other Plastic & Metal products as OEMs.



poly75

75 mm Soft Castor



Wheel Dia
75 mm



Hub Dia
16 mm



Castor Width
55 mm



Castor Height
82 mm



Push Stem
11x22, 11x24,
10x22



Threaded Stem
3/8"x18, M8x15,
M10x15



Plate Stem
37x37, 40x40,
43x43, 54x54



Static Load
75 kg

Dynamic Load
50 kg

daN
45



Temperature Resistant
0 deg C to
70 deg C

Custom Stems / Mounting & Patented Zero Noise Stem Available



Conductive
version available



Standard Grey & Black
Custom Colour Available



Test Pass
Ansi-BIFMA, Din-EN

Raw Material

Hub: High Impact Thermoplastics

Wheel Core: High Impact Thermoplastics

Wheel Tread: Soft Thermoplastic Polyurethane





poly75-bk

75 mm Soft Lockable Castor




Conductive
version available


Standard Grey & Black
Custom Colour Available


Test Pass
Ansi-BIFMA, Din-EN

Raw Material

Hub: High Impact Thermoplastics

Wheel Core: High Impact Thermoplastics

Wheel Tread: Soft Thermoplastic Polyurethane



Wheel Dia
75 mm



Hub Dia
16 mm



Castor Width
55 mm



Castor Height
82 mm



Push Stem
11x22, 11x24,
10x22



Threaded Stem
3/8"x18, M8x15,
M10x15



Plate Stem
37x37, 40x40,
43x43, 54x54

Custom Stems / Mounting & Patented Zero Noise Stem Available



Static Load
75 kg

Dynamic Load
50 kg

daN
45



Temperature Resistant
0 deg C to
70 deg C



sleek 75

75 mm Hard Castor



Wheel Dia
75 mm



Hub Dia
20 mm



Castor Width
55 mm



Castor Height
82 mm



Push Stem
11x22, 11x24,
10x22



Threaded Stem
3/8"x18, M8x15,
M10x15



Plate Stem
37x37, 40x40,
43x43, 54x54,
65x65



Static Load
75 kg

Dynamic Load
50 kg

daN
45



Temperature Resistant
0 deg C to
70 deg C

Custom Stems / Mounting & Patented Zero Noise Stem Available



Standard Grey & Black
Custom Colour Available



Test Pass
Ansi-BIFMA, Din-EN

Raw Material

Hub: High Impact Thermoplastics

Wheel Core: High Impact Thermoplastics

Wheel Tread: Soft Thermoplastic Polyurethane





sleek 75-bk

75 mm Hard Castor




Standard Grey & Black
Custom Colour Available


Test Pass
Ansi-BIFMA, Din-EN

Raw Material

Hub: High Impact Thermoplastics

Wheel Core: High Impact Thermoplastics

Wheel Tread: Soft Thermoplastic Polyurethane



Wheel Dia
75 mm



Hub Dia
20 mm



Castor Width
55 mm



Castor Height
82 mm



Push Stem
11x22, 11x24,
10x22



Threaded Stem
3/8"x18, M8x15,
M10x15



Plate Stem
37x37, 40x40,
43x43, 54x54,
65x65



Static Load
75 kg

Dynamic Load
50 kg

daN
45



Temperature Resistant
0 deg C to
70 deg C

Custom Stems / Mounting & Patented Zero Noise Stem Available



poly65

65 mm Soft Castor




Conductive
version available


Standard Grey & Black
Custom Colour Available


Test Pass
Ansi-BIFMA, Din-EN

Raw Material

Hub: High Impact Thermoplastics

Wheel Core: High Impact Thermoplastics

Wheel Tread: Soft Thermoplastic Polyurethane



Wheel Dia
65 mm



Hub Dia
28 mm



Castor Width
43 mm



Castor Height
71 mm



Push Stem
11x22, 11x24,
10x22



Threaded Stem
3/8"x18, M8x15,
M10x15



Plate Stem
37x37, 40x40,
43x43, 54x54,
65x65

Custom Stems / Mounting & Patented Zero Noise Stem Available



Static Load
65 kg

Dynamic Load
45 kg

daN
45



Temperature Resistant
0 deg C to
70 deg C



poly65-bk

65 mm Soft Lockable Castor




Conductive
version available


Standard Grey & Black
Custom Colour Available


Test Pass
Ansi-BIFMA, Din-EN

Raw Material

Hub: High Impact Thermoplastics

Wheel Core: High Impact Thermoplastics

Wheel Tread: Soft Thermoplastic Polyurethane



Wheel Dia
65 mm



Hub Dia
28 mm



Castor Width
43 mm



Castor Height
71 mm



Push Stem
11x22, 11x24,
10x22



Threaded Stem
3/8"x18, M8x15,
M10x15



Plate Stem
37x37, 40x40,
43x43, 54x54,
65x65

Custom Stems / Mounting & Patented Zero Noise Stem Available



Static Load
65 kg

Dynamic Load
45 kg

daN
45



Temperature Resistant
0 deg C to
70 deg C



slim 65

65 mm Hard Castor




Standard Grey & Black
Custom Colour Available


Test Pass
Ansi-BIFMA, Din-EN

Raw Material

Hub: High Impact Thermoplastics

Wheel Core: High Impact Thermoplastics

Wheel Tread: Soft Thermoplastic Polyurethane



Wheel Dia
65 mm



Hub Dia
28 mm



Castor Width
43 mm



Castor Height
71 mm



Push Stem
11x22, 11x24,
10x22



Threaded Stem
3/8"x18, M8x15,
M10x15



Plate Stem
37x37, 40x40,
43x43, 54x54,
65x65



Static Load
65 kg

Dynamic Load
45 kg

daN
45



Temperature Resistant
0 deg C to
70 deg C

Custom Stems / Mounting & Patented Zero Noise Stem Available



slim 65-bk

65 mm Hard Castor




Standard Grey & Black
Custom Colour Available


Test Pass
Ansi-BIFMA, Din-EN

Raw Material

Hub: High Impact Thermoplastics

Wheel Core: High Impact Thermoplastics

Wheel Tread: Soft Thermoplastic Polyurethane



Wheel Dia
65 mm



Hub Dia
28 mm



Castor Width
43 mm



Castor Height
71 mm



Push Stem
11x22, 11x24,
10x22



Threaded Stem
3/8"x18, M8x15,
M10x15



Plate Stem
37x37, 40x40,
43x43, 54x54,
65X65



Static Load
65 kg

Dynamic Load
45 kg

daN
45



Temperature Resistant
0 deg C to
70 deg C

Custom Stems / Mounting & Patented Zero Noise Stem Available



sleek65

65 mm hard Castor



Standard Black
Custom Colour Available



Test Pass
Ansi-BIFMA, Din-EN

Raw Material

Hub: High Impact Thermoplastics

Wheel: High Impact Thermoplastics



Wheel Dia
65 mm



Hub Dia
18 mm, 26 mm



Castor Width
53 mm



Castor Height
71 mm



Push Stem
11x22, 11x24,
10x22



Threaded Stem
3/8"x18, M8x15,
M10x15



Plate Stem
37x37, 40x40,
43x43, 54x54,
65x65



Static Load
65 kg

Dynamic Load
45 kg

daN
45



Temperature Resistant
0 deg C to
70 deg C

Custom Stems / Mounting & Patented Zero Noise Stem Available



poly65-e

65 mm Soft Castor




Conductive
version available


Standard Black & Grey
Custom Colour Available


Test Pass
Ansi-BIFMA, Din-EN

Raw Material

Hub: High Impact Thermoplastics

Wheel Core: High Impact Thermoplastics

Wheel Tread: Soft Thermoplastic Polyurethane



Wheel Dia
65 mm



Hub Dia
18 mm, 26 mm



Castor Width
49 mm



Castor Height
70 mm



Push Stem
11x22, 11x24,
10x22



Threaded Stem
3/8"x18, M8x15,
M10x15



Plate Stem
37x37, 40x40,
43x43, 54x54,
65X65



Static Load
65 kg

Dynamic Load
45 kg

daN
45



Temperature Resistant
0 deg C to
70 deg C

Custom Stems / Mounting & Patented Zero Noise Stem Available



pressure active65

65 mm Auto Brake Soft Castor



Now Also Available In Hard Wheel



Wheel Dia
65 mm



Hub Dia
26 mm



Castor Width
49 mm



Castor Height
74 mm



Push Stem
11x22, 11x24,
10x22



Threaded Stem
3/8"x18, M8x15,
M10x15

Custom Stems / Mounting & Patented Zero Noise Stem Available



Static Load
65 kg

Dynamic Load
45 kg

daN
45



Temperature Resistant
0 deg C to
70 deg C



Conductive version available



Standard Black & Grey Custom Colour Available



Test Pass
Ansi-BIFMA, Din-EN

Raw Material

Hub: High Impact Thermoplastics

Wheel Core: High Impact Thermoplastics

Wheel Tread: Soft Thermoplastic Polyurethane



Safety Series

SUSTAINABILITY IS THE KEY TO THE FUTURE

- Eco Friendly Production
- Life Cycle Thinking
- Smart Manufacturing Technologies
- Manufacturing of 100% Recyclable Castors from Prime Material.
- Manufacturing of 100% Recyclable Castors from 100% Recycled Plastic. Sourced from post-consumer & industrial waste. (still meeting all International standards)
- Using Ocean reclaimed plastic by applying advanced engineering.



*"We are committed to
creating a greener future"*



poly60-bk

60 mm Soft Castor



Conductive version available



Standard Black & Grey Custom Colour Available



Test Pass
Ansi-BIFMA, Din-EN

Raw Material

Hub: High Impact Thermoplastics

Wheel Core: High Impact Thermoplastics

Wheel Tread: Soft Thermoplastic Polyurethane



Wheel Dia

60 mm



Hub Dia

23 mm



Castor Width

52 mm



Castor Height

70 mm



Push Stem

11x22, 11x24,
10x22



Threaded Stem

3/8"x18, M8x15,
M10x15



Plate Stem

37x37, 40x40,
43x43, 54x54



Static Load

60 kg

Dynamic Load

40 kg

daN

45



Temperature Resistant

0 deg C to

70 deg C

Custom Stems / Mounting & Patented Zero Noise Stem Available



poly60

60 mm Soft Castor



PATENTED ZERO NOISE STEM



Conductive version available



Standard Black & Grey
Custom Colour Available



Test Pass
Ansi-BIFMA, Din-EN

Raw Material

Hub: High Impact Thermoplastics

Wheel Core: High Impact Thermoplastics

Wheel Tread: Soft Thermoplastic Polyurethane



Wheel Dia
60 mm



Hub Dia
16 mm, 22 mm, 38 mm



Castor Width
52 mm



Castor Height
70 mm



Push Stem
11x22, 11x24,
10x22



Threaded Stem
3/8"x18, M8x15,
M10x15



Plate Stem
37x37, 40x40,
43x43, 54x54

Custom Stems / Mounting & Patented Zero Noise Stem Available



Static Load
60 kg

Dynamic Load
40 kg

daN
45



Temperature Resistant
0 deg C to
70 deg C



sleek60-bk

60 mm Lockable Hard Castor



Black Standard
Custom Colour Available



Test Pass
Ansi-BIFMA, Din-EN

Raw Material

Hub: High Impact Thermoplastics

Wheel: High Impact Thermoplastics



Wheel Dia
60 mm



Hub Dia
23 mm



Castor Width
52 mm



Castor Height
68 mm



Push Stem
11x22, 11x24,
10x22



Threaded Stem
3/8"x18, M8x15,
M10x15



Plate Stem
37x37, 40x40,
43x43, 54x54



Static Load
60 kg

Dynamic Load
40 kg

daN
45



Temperature Resistant
0 deg C to
70 deg C

Custom Stems / Mounting & Patented Zero Noise Stem Available



sleek60

60 mm Hard Castor



Black Standard
Custom Colour Available



Test Pass
Ansi-BIFMA, Din-EN

Raw Material

Hub: High Impact Thermoplastics

Wheel: High Impact Thermoplastics



Wheel Dia
60 mm



Hub Dia
16 mm, 23 mm &
38 mm



Castor Width
52 mm



Castor Height
68 mm



Push Stem
11x22, 11x24,
10x22



Threaded Stem
3/8"x18, M8x15,
M10x15



Plate Stem
37x37, 40x40,
43x43, 54x54



Static Load
60 kg

Dynamic Load
40 kg

daN
45



Temperature Resistant
0 deg C to
70 deg C

Custom Stems / Mounting & Patented Zero Noise Stem Available



sleek55

55 mm Hard Castor



Black Standard
Custom Colour Available



Test Pass
Ansi-BIFMA, Din-EN

Raw Material

Hub: High Impact Thermoplastics

Wheel: High Impact Thermoplastics



Wheel Dia
55 mm



Hub Dia
23 mm & 38 mm



Castor Width
50 mm



Castor Height
65 mm



Push Stem
11x22, 11x24,
10x22



Threaded Stem
3/8"x18, M8x15,
M10x15



Plate Stem
37x37, 40x40,
43x43



Static Load
55 kg

Dynamic Load
35 kg

daN
40

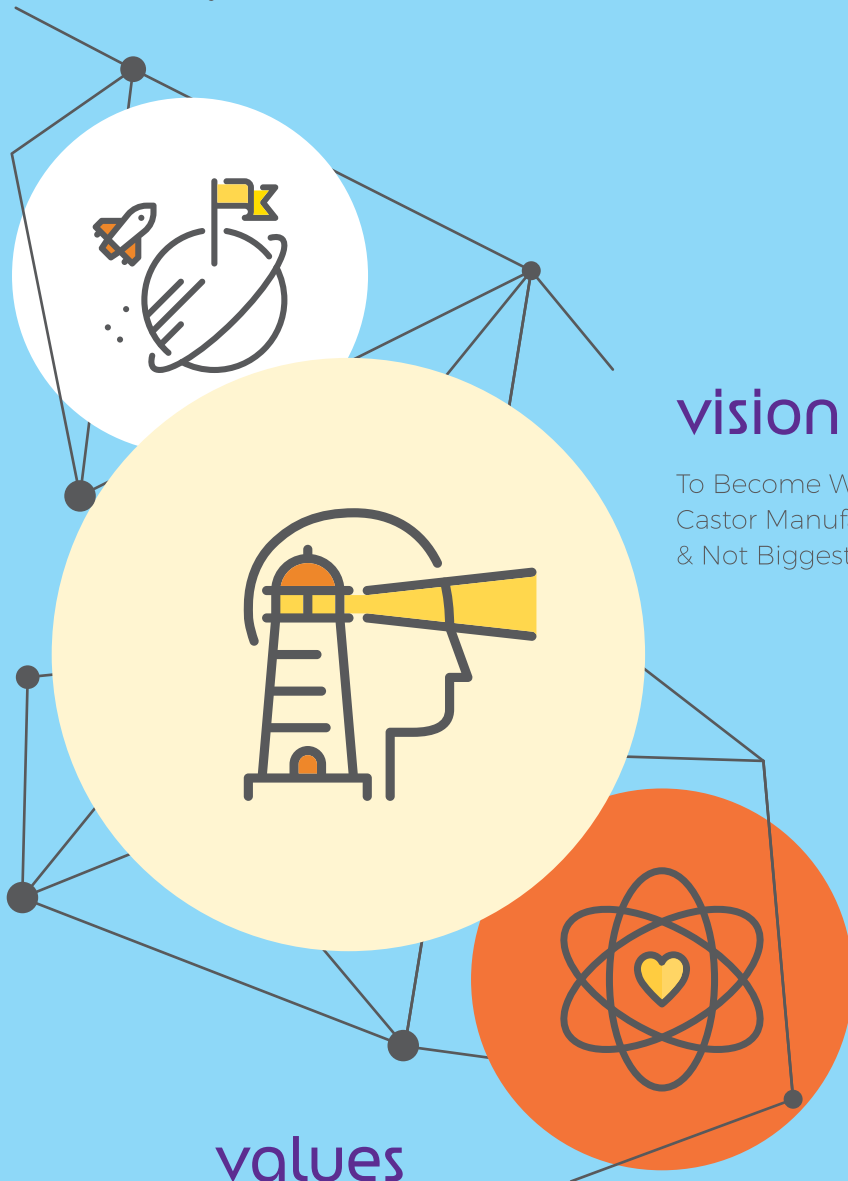


Temperature Resistant
0 deg C to
70 deg C

Custom Stems / Mounting & Patented Zero Noise Stem Available

mission

To enable and offer our customers with cutting edge products and solutions in a timely and cost-effective way.



vision

To Become World's Best
Castor Manufacturer
& Not Biggest.

values

Strong ethics is a priority for every one of us. It's a core business practice to act in a transparent, trustworthy manner. Treating everyone with the common decency we all deserve and expect. Bringing different lived experiences and a range of backgrounds into a shared environment where everyone has equal opportunity. A culture of humility and continuous learning and the highest quality standards must be maintained.



iconic55

55 mm Lifestyle Hard Castor



Black & Chrome / Grey & Chrome Standard
Custom Colour Available



Test Pass
Ansi-BIFMA, Din-EN

Raw Material

Hub: High Impact Thermoplastics

Wheel: High Impact Thermoplastics



Wheel Dia
55 mm



Hub Dia
23 mm & 38 mm



Castor Width
51 mm



Castor Height
65 mm



Push Stem
11x22, 11x24,
10x22



Threaded Stem
3/8"x18, M8x15,
M10x15



Plate Stem
37x37, 40x40,
43x43



Static Load
55 kg

Dynamic Load
35 kg

daN
35

Custom Stems / Mounting & Patented Zero Noise Stem Available



sparkle55

55mm Lifestyle Hard Castor



Black & Chrome / Grey & Chrome Standard
Custom Colour Available



Test Pass
Ansi-BIFMA, Din-EN

Raw Material

Hub: High Impact Thermoplastics

Wheel: High Impact Thermoplastics



Wheel Dia
55 mm



Hub Dia
23 mm & 38 mm



Castor Width
51 mm



Castor Height
65 mm



Push Stem
11x22, 11x24,
10x22



Threaded Stem
3/8"x18, M8x15,
M10x15



Plate Stem
37x37, 40x40,
43x43



Static Load
55 kg

Dynamic Load
35 kg

daN
35

Custom Stems / Mounting & Patented Zero Noise Stem Available



poly55

55 mm Soft Castor



Conductive version available



Standard Black & Grey
Custom Colour Available



Test Pass
Ansi-BIFMA, Din-EN

Raw Material

Hub: High Impact Thermoplastics

Wheel Core: High Impact Thermoplastics

Wheel Tread: Soft Thermoplastic Polyurethane



Wheel Dia
55 mm



Hub Dia
23 mm & 38 mm



Castor Width
50 mm



Castor Height
64 mm



Push Stem
11x22, 11x24,
10x22



Threaded Stem
3/8"x18, M8x15,
M10x15



Plate Stem
37x37, 40x40,
43x43



Static Load
55 kg

Dynamic Load
35 kg

daN
40



Temperature Resistant
0 deg C to
70 deg C

Custom Stems / Mounting & Patented Zero Noise Stem Available



trend

50 mm Hard Castor



Black Standard
Custom Colour Available



Test Pass
Ansi-BIFMA, Din-EN

Raw Material

Hub: High Impact Thermoplastics

Wheel: High Impact Thermoplastics



Wheel Dia

50 mm



Hub Dia

Flat (european style)



Castor Width

57 mm



Castor Height

61 mm



Push Stem

11x22, 11x24,
10x22



Threaded Stem

3/8"x18, M8x15,
M10x15

Custom Stems / Mounting &
Patented Zero Noise Stem Available



Plate Stem

37x37, 40x40,
43x43



Static Load

50 kg

Dynamic Load

30kg

daN

40



Temperature Resistant

0 deg C to
70 deg C



pressure active50

50 mm Auto Brake Soft Castor



Now Also Available In Hard Wheel



Wheel Dia
50 mm



Hub Dia
Flat (european style)



Castor Width
54 mm



Castor Height
62 mm



Push Stem
11x22, 11x24,
10x22



Threaded Stem
3/8"x18, M8x15,
M10x15

Custom Stems / Mounting & Patented Zero Noise Stem Available



Static Load
50kg

Dynamic Load
30 kg

daN
40



Temperature Resistant
0 deg C to
70 deg C



Conductive version available



Standard Black & Grey Custom Colour Available



Test Pass
Ansi-BIFMA, Din-EN

Raw Material

Hub: High Impact Thermoplastics

Wheel Core: High Impact Thermoplastics

Wheel Tread: Soft Thermoplastic Polyurethane



Safety Series



trend pu

50 mm Soft Castor




Conductive
version available


Standard Black & Grey
Custom Colour Available


Test Pass
Ansi-BIFMA, Din-EN

Raw Material

Hub: High Impact Thermoplastics

Wheel Core: High Impact Thermoplastics

Wheel Tread: Soft Thermoplastic Polyurethane



Wheel Dia
50mm



Hub Dia
Flat (european style)



Castor Width
57 mm



Castor Height
61 mm



Push Stem
11x22, 11x24,
10x22



Threaded Stem
3/8"x18, M8x15,
M10x15

Custom Stems / Mounting &
Patented Zero Noise Stem Available



Plate Stem
37x37, 40x40,
43x43



Static Load
50 kg

Dynamic Load
30 kg

daN
40



Temperature Resistant
0 deg C to
70 deg C



elegant

50 mm Hard Castor



Black Standard
Custom Colour Available



Test Pass
Ansi-BIFMA, Din-EN

Raw Material

Hub: High Impact Thermoplastics

Wheel: High Impact Thermoplastics



Wheel Dia

50 mm



Hub Dia

32 mm, 38 mm & 50 mm



Castor Width

54 mm



Castor Height

60 mm



Push Stem

11x22, 11x24,
10x22



Threaded Stem

3/8"x18, M8x15,
M10x15

Custom Stems / Mounting &
Patented Zero Noise Stem Available



Static Load

50 kg

Dynamic Load

30kg

daN

40



Temperature Resistant

0 deg C to

70 deg C



human safety

For furniture safety, few things are the basic & what would be more important than the office chair.

CASTOR WHEELS, which are incorrect for the floor surface and can pose the risk of serious injury. Even brand new chairs can cause problems if they are equipped with hard wheel castors suitable for carpeted floors only. For chairs to roll safely, use hard wheels on carpeted floors, and soft wheels on chair mats and hard floor surfaces. Protect yourself against any fatal accident by equipping your office chairs with quality Castors.

As the industry's leading manufacturer & exporter of Furniture Castors for over 3 decades, REGAL CASTORS provides the solution for every type of Castor safety problem.

Just as tires must have the proper tread for safe driving performance on dry pavement as well as slick or snow-covered roadways, chair movement depends on wheels that provide appropriate traction on hard or soft surfaces.

For your chair safety, you need REGAL CASTORS' exclusive line of hard and soft Castor Wheels with **roll control**. We let you choose the Castors that are the safest for specific types of surfaces, from vinyl,

linoleum and hardwood floors or plastic chair mats to industrial-grade or plush carpeting.

Hard floor surfaces require soft wheel castors with **roll control**. If not, then the chair will be subject to dangerously rapid movement & will spin out of control while the user is seated, or the chair will roll away when the user rises & then tries to resume a seat. In addition, injury due to falling is an obvious risk.

A more insidious problem is the muscle strain that can result from constant efforts to keep the chair in place. The requirement for carpeted floor surfaces is just the opposite. Hard wheel Castors are necessary for the chair to glide smoothly across the floor. If instead, the caster grips the carpeting and the user tugs back and forth to move the chair, it can topple over. Even if this hazard is avoided, such a constant exertion can result in strain and injury.

REGAL CASTORS products have been ergonomically designed to eradicate such risks to one's health and safety. Built for quality and durability, REGAL CASTORS are safety essentials. So, the question is not that you need REGAL CASTORS for safety, but which Castors you need.



**DON'T LET INCORRECT
CASTOR TOPPLE YOUR SAFETY**



elegant pu

50 mm Soft Castor



Wheel Dia
50 mm



Hub Dia
32 mm, 38 mm & 50 mm



Castor Width
54 mm



Castor Height
60 mm



Push Stem
11x22, 11x24,
10x22



Threaded Stem
3/8"x18, M8x15,
M10x15

Custom Stems / Mounting &
Patented Zero Noise Stem Available



Conductive
version available



Standard Black & Grey
Custom Colour Available



Test Pass
Ansi-BIFMA, Din-EN

Raw Material

Hub: High Impact Thermoplastics

Wheel Core: High Impact Thermoplastics

Wheel Tread: Soft Thermoplastic Polyurethane



Static Load
50 kg

Dynamic Load
30 kg

daN
40



Temperature Resistant
0 deg C to
70 deg C



formula50

50 mm Soft Castor



Conductive version available



Standard Black & Grey Custom Colour Available



Test Pass
Ansi-BIFMA, Din-EN

Raw Material

Hub: High Impact Thermoplastics

Wheel Core: High Impact Thermoplastics

Wheel Tread: Soft Thermoplastic



Wheel Dia
50 mm



Hub Dia
16 mm



Castor Width
58 mm



Castor Height
62 mm



Push Stem
11x22, 11x24,
10x22



Threaded Stem
3/8"x18, M8x15,
M10x15



Plate Stem
37x37, 40x40,
43x43



Static Load
50 kg

Dynamic Load
30 kg

daN
40



Temperature Resistant
0 deg C to
70 deg C

Custom Stems / Mounting & Patented Zero Noise Stem Available



formula50-bk

50 mm Lockable Soft Castor



Conductive version available



Standard Black & Grey Custom Colour Available



Test Pass
Ansi-BIFMA, Din-EN

Raw Material

Hub: High Impact Thermoplastics

Wheel Core: High Impact Thermoplastics

Wheel Tread: Soft Thermoplastic



Wheel Dia
50 mm



Hub Dia
16 mm



Castor Width
58 mm



Castor Height
62 mm



Push Stem
11x22, 11x24,
10x22



Threaded Stem
3/8"x18, M8x15,
M10x15



Plate Stem
37x37, 40x40,
43x43



Static Load
50 kg

Dynamic Load
30 kg

daN
40



Temperature Resistant
0 deg C to
70 deg C

Custom Stems / Mounting & Patented Zero Noise Stem Available



matt classic

50 mm Hard Castor



Black Standard
Custom Colour Available



Test Pass
Ansi-BIFMA, Din-EN

Raw Material

Hub: High Impact Thermoplastics

Wheel: High Impact Thermoplastics



Wheel Dia
50mm



Hub Dia
16 mm



Castor Width
55 mm



Castor Height
61 mm



Push Stem
11x22, 11x24,
10x22



Threaded Stem
3/8"x18, M8x15,
M10x15



Plate Stem
37x37, 40x40,
43x43



Static Load
50 kg

Dynamic Load
30 kg

daN
40



Temperature Resistant
0 deg C to
70 deg C

Custom Stems / Mounting & Patented Zero Noise Stem Available



matt classic-bk

50 mm Lockable Hard Castor



Black Standard
Custom Colour Available



Test Pass
Ansi-BIFMA, Din-EN

Raw Material

Hub: High Impact Thermoplastics

Wheel: High Impact Thermoplastics



Wheel Dia
50 mm



Hub Dia
16mm



Castor Width
55 mm



Castor Height
61 mm



Push Stem
11x22, 11x24,
10x22



Threaded Stem
3/8"x18, M8x15,
M10x15



Plate Stem
37x37, 40x40,
43x43



Static Load
50 kg

Dynamic Load
30 kg

daN
40



Temperature Resistant
0 deg C to
70 deg C

Custom Stems / Mounting & Patented Zero Noise Stem Available



matt classic pu

50 mm Soft Castor




Conductive
version available


Standard Black & Grey
Custom Colour Available


Test Pass
Ansi-BIFMA, Din-EN

Raw Material

Hub: High Impact Thermoplastics

Wheel Core: High Impact Thermoplastics

Wheel Tread: Soft Thermoplastic Polyurethane



Wheel Dia
50 mm



Hub Dia
16 mm



Castor Width
61 mm



Castor Height
64 mm



Push Stem
11x22, 11x24,
10x22



Threaded Stem
3/8"x18, M8x15,
M10x15



Plate Stem
37x37, 40x40,
43x43



Static Load
50 kg

Dynamic Load
30 kg

daN
40



Temperature Resistant
0 deg C to
70 deg C

Custom Stems / Mounting & Patented Zero Noise Stem Available



rollon

50 mm Single Wheel Hard Castor



Standard Black, Grey
Custom Colour Available



Test Pass
Ansi-BIFMA, Din-EN

Raw Material

Hub: High Impact Thermoplastics

Wheel: High Impact Thermoplastics



Special Caster for Salon &
Hospital Furniture with Thread &
Hair Guard Technology



Wheel Dia
50 mm



Hub Dia
13 mm



Castor Width
49 mm



Castor Height
52 mm



Push Stem
11x22



Threaded Stem
M8x15,
M10x15



Plate Stem
37x37, 40x40,
43x43



Static Load
40 kg

Dynamic Load
20 kg

daN
30



Temperature Resistant
0 deg C to
70 deg C

Custom Stems / Mounting & Patented Zero Noise Stem Available

export

Regal Castors is today a name to reckon with in the production and marketing of Castor Wheels & furniture components in India.

Besides unparalleled fame and reputation in the Indian markets, we have also broadened our horizons to International territories.

Regal Castors enjoys a good International presence in the Castor market. with International quality standards and competitive pricing, we have successfully marked our presence by marketing our complete product portfolio via our own sales team & channel partners worldwide.

Proximity and flexibility are important principles to us so that we can enjoy partnerships and smooth co-operations with all our customers. We have strategically appointed our Channel Partners worldwide & more are added to new locations regularly because venturing into new lands requires an understanding of the psyche and requirements of the local consumers which can be only understood by local representatives of the region or country.





interceptor-bk

50 mm Lockable Hard Castor



Black Standard
Custom Colour Available



Test Pass
Ansi-BIFMA, Din-EN

Raw Material

Hub: High Impact Thermoplastics

Wheel: High Impact Thermoplastics



Wheel Dia
50 mm



Hub Dia
30 mm



Castor Width
49 mm



Castor Height
60 mm



U Clamp Stem
for 19mm
panel



Threaded Stem
3/8"x18, M8x15,
M10x15



Plate Stem
37x37, 40x40,
43x43

Custom Stems / Mounting & Patented Zero Noise Stem Available



Static Load
40 kg

Dynamic Load
25 kg

daN
30



Temperature Resistant
0 deg C to
70 deg C



interceptor

50 mm Hard Castor



Black Standard
Custom Colour Available



Test Pass
Ansi-BIFMA, Din-EN

Raw Material

Hub: High Impact Thermoplastics

Wheel: High Impact Thermoplastics



Wheel Dia
50mm



Hub Dia
30 mm



Castor Width
49 mm



Castor Height
60 mm



U Clamp Stem
for 19mm
panel



Threaded Stem
3/8"x18, M8x15,
M10x15



Plate Stem
37x37, 40x40,
43x43



Static Load
40 kg

Dynamic Load
25 kg

daN
30



Temperature Resistant
0 deg C to
70 deg C

Custom Stems / Mounting & Patented Zero Noise Stem Available



tinu

40 mm Hard Castor



Black Standard
Custom Colour Available



Test Pass
Ansi-BIFMA, Din-EN

Raw Material

Hub: High Impact Thermoplastics

Wheel: High Impact Thermoplastics



Wheel Dia

40 mm



Hub Dia

13 mm



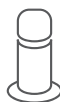
Castor Width

49 mm



Castor Height

48 mm



Push Stem

11x22

7x28



Threaded Stem

M6X15, M8x15,

M10x15



Plate Stem

37x37, 40x40,

43x43

Custom Stems / Mounting & Patented Zero Noise Stem Available



Static Load

40 kg

Dynamic Load

20 kg

daN

30



Temperature Resistant

0 deg C to

70 deg C



tiny-bk

40mm Lockable Hard Castor



Black Standard
Custom Colour Available



Test Pass
Ansi-BIFMA, Din-EN

Raw Material

Hub: High Impact Thermoplastics

Wheel: High Impact Thermoplastics



Wheel Dia
40 mm



Hub Dia
13 mm



Castor Width
49 mm



Castor Height
48 mm



Push Stem
11x22,
7x28



Threaded Stem
M6X15, M8x15,
M10x15



Plate Stem
37x37, 40x40,
43x43



Static Load
40 kg

Dynamic Load
20 kg

daN
30



Temperature Resistant
0 deg C to
70 deg C

Custom Stems / Mounting & Patented Zero Noise Stem Available



5th castor

23 mm Anti Toppler Hard Castor



Wheel Dia
23 mm



Castor Width
25 mm



Castor Height
43 mm



Mounting
19x52 In built mounting



Static Load
30 kg



Temperature Resistant
0 deg C to
70 deg C



Black Standard
Custom Colour Available

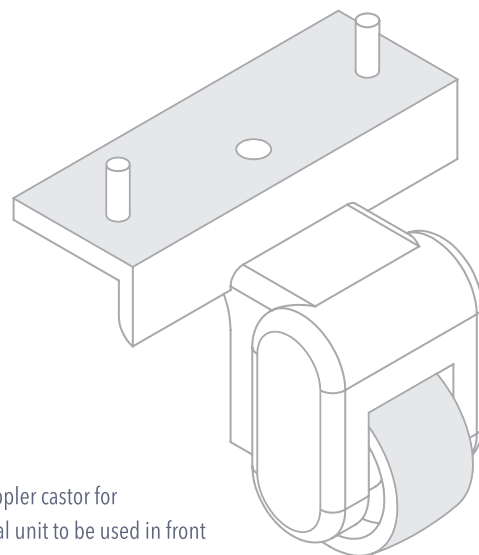
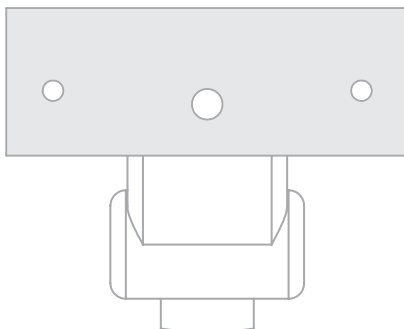


Test Pass
Ansi-BIFMA, Din-EN

Raw Material

Hub: High Impact Thermoplastics

Wheel: High Impact Thermoplastics



Special anti toppler castor for mobile pedestal unit to be used in front



diplomat

35 mm Hard Castor



Chrome & Black Standard
Custom Colour Available



Test Pass
Ansi-BIFMA, Din-EN

Raw Material

Hub: Zamak

Wheel: High Impact Thermoplastics



Wheel Dia
35 mm



Hub Dia
Flat



Castor Width
41 mm



Castor Height
40 mm



Push Stem
11x22



Threaded Stem
M6x15, M8x15,
M10x15



Plate Stem
28x28,
37x37



Static Load
40 kg

Dynamic Load
30 kg

daN
35



Temperature Resistant
0 deg C to
70 deg C

Custom Stems / Mounting & Patented Zero Noise Stem Available



glib

30 mm Hard Castor



Black Standard
Custom Colour Available



Test Pass
Ansi-BIFMA, Din-EN

Raw Material

Hub: High Impact Thermoplastics

Wheel: High Impact Thermoplastics



Wheel Dia

30 mm



Hub Dia

Flat



Castor Width

38 mm



Castor Height

38 mm



Push Stem

7x28,
10x22



Threaded Stem

M6x15, M8x15,
M10x15



Plate Stem

28X28,
37x37



Static Load

40 kg

Dynamic Load

30 kg

daN

30



Temperature Resistant

0 deg C to
70 deg C

Custom Stems / Mounting & Patented Zero Noise Stem Available



glib-bk

30 mm Lockable Hard Castor



Black Standard
Custom Colour Available



Test Pass
Ansi-BIFMA, Din-EN

Raw Material

Hub: High Impact Thermoplastics

Wheel: High Impact Thermoplastics



Wheel Dia
30 mm



Hub Dia
Flat



Castor Width
38 mm



Castor Height
38 mm



Push Stem
7x28,
10x22



Threaded Stem
M6x15, M8x15,
M10x15



Plate Stem
28X28,
37x37



Static Load
40 kg

Dynamic Load
30 kg

daN
30



Temperature Resistant
0 deg C to
70 deg C

Custom Stems / Mounting & Patented Zero Noise Stem Available



mdl

Multi Directional Leveler



Dia
33 mm



Height
16 mm



Push Stem
11x22



Threaded Stem
3/8"x18, M8x15,
M10x15



Plate Stem
28x28,
37x37



Static Load
50 kg



Temperature Resistant
0 deg C to
70 deg C

Custom Stems / Mounting & Patented Zero Noise Stem Available



Black & Chrome Standard
Custom Colour Available



Test Pass

Raw Material

Under construction: High Impact Thermoplastics

Outer Cover: Stainless Steel



Adjust height, angel & tilt variations



glide01

Leveler



Black Standard
Custom Colour Available



Test Pass

Raw Material: High Impact Thermoplastics



Dia
50 mm



Height
37 mm



Push Stem
11x22



Threaded Stem
3/8"x18, M8x15,
M10x15



Plate Stem
37x37, 40x40,
43x43

Custom Stems / Mounting & Patented Zero Noise Stem Available



Static Load
50 kg



Temperature Resistant
0 deg C to
70 deg C





glide02

Leveler



Black Standard
Custom Colour Available



Test Pass

Raw Material: High Impact Thermoplastics



Dia
50 mm



Height
37 mm



Push Stem
11x22



Threaded Stem
3/8"x18, M8x15,
M10x15



Plate Stem
37x37, 40x40,
43x43



Static Load
50 kg



Temperature Resistant
0 deg C to
70 deg C

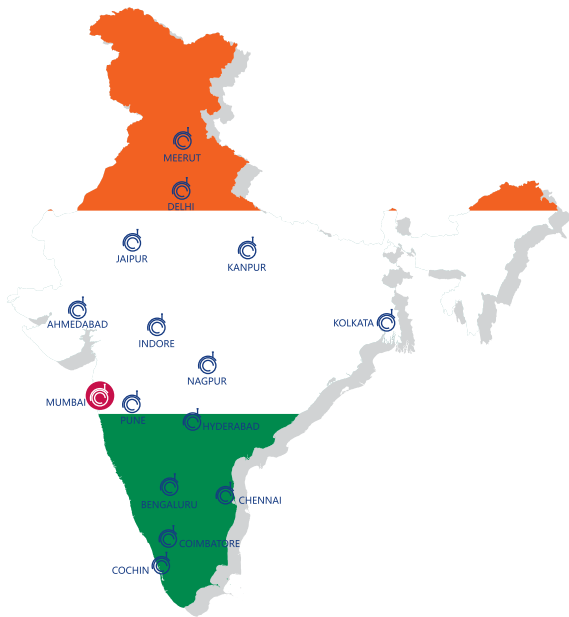
Custom Stems / Mounting & Patented Zero Noise Stem Available



milestone

- ▲ 1st Castor manufacturing company to introduce "TOTAL PLASTIC CASTOR" in the year 1984
- ▲ India 1st furniture castor manufacturing company to get ISO 9001 Certified In India
- ▲ Exporting directly & via channel partners worldwide.
- ▲ Only Castor manufacturer from Asia who is a member of BIFMA & 1 out of 5 castor manufacturers present.
- ▲ Only Castor manufacturing company from India to have a presence in major International Trade Fairs.
- ▲ Supplying Castors to the world's top office furniture companies.
- ▲ Supplying to Fortune 500 companies.
- ▲ Suppliers too almost 90% of organised segment furniture manufacturers in India.
- ▲ Producing more than 50 Million Castors.
- ▲ Awarded as "Best Manufacturing Company for Castor Wheels" at Business Awards & Summit 2019.
- ▲ For the last 10 years continuously Regal Castors is featured in Furniture Castors Market Analysis Report & even current report for 2020-2026 our company is featured in the same.
- ▲ In-house test facilities to test Castors as per International standards such as AFRDI, ANSI-BIFMA, DIN-EN, etc...
- ▲ Only furniture Castor manufacturer in India with product range from 30mm to 75mm Castor with hard & soft wheels, with & without brake.
- ▲ As per our current research; we are the only Castor manufacturer to give up to 12 Years of Warranty on Castors.





Regal Castors Pvt. Ltd

AN ISO 9001:2015 CO.

INDIA | CA | EU | UK | USA

HO: B-F/20 Saraf Kaskar Industrial Estate,
S.V. Road, Oshiwara, Jogeshwari (West)
Mumbai-400 102, India

Tel: +91 22 2679 0437 | +91 22 6695 1178

Email: sales@regalcastors.com

ReSource Inc

CANADA

59 McDowell Gate,
Markham, Ontario
Canada, L6G 1B5
Phone: 905-989-1005

USA

27358 Pioneer Avenue
Redlands, California
United States, 92374

www.regalcastors.com

